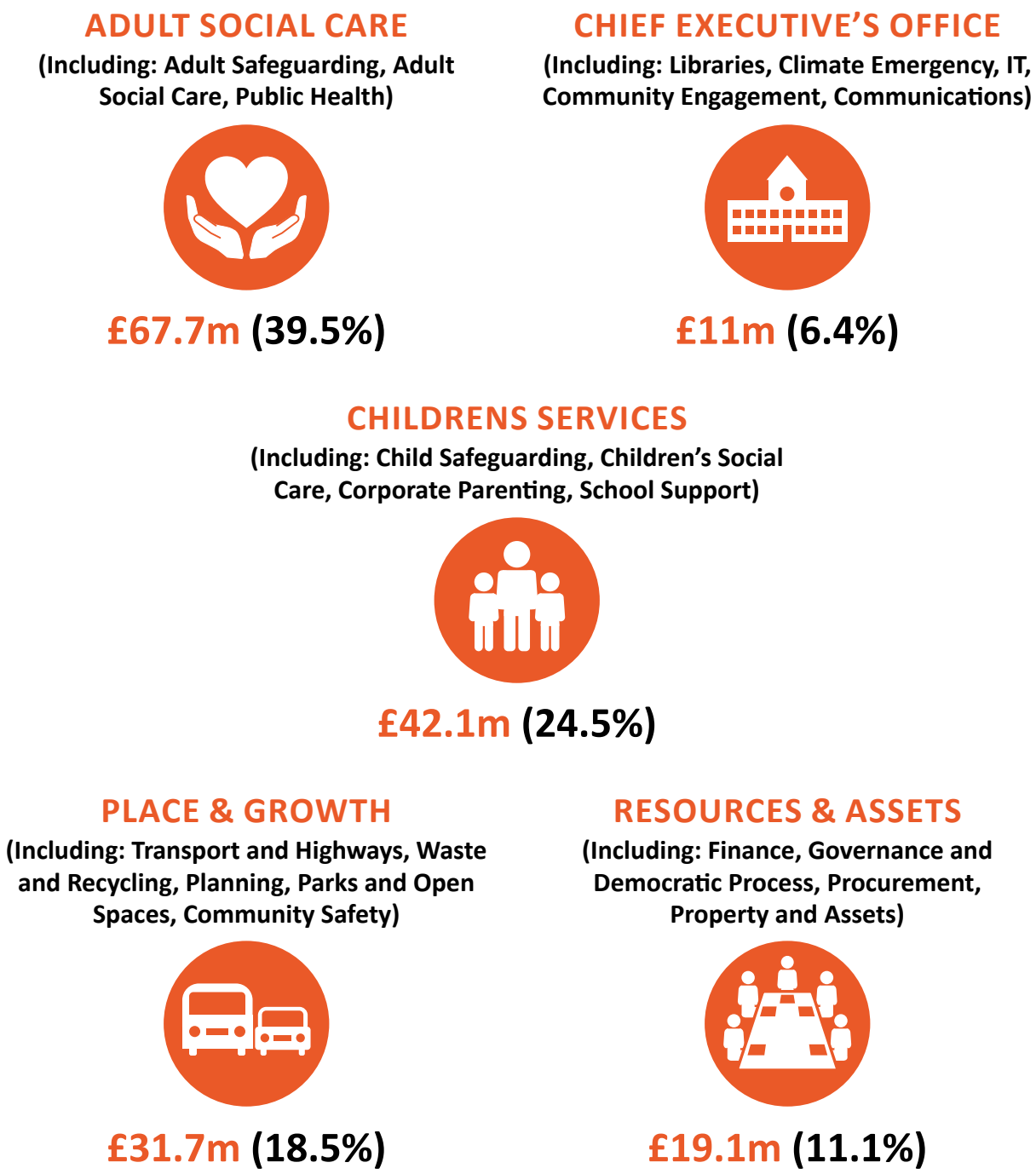


# BUDGET BREAKDOWN 2024/25

## WHAT YOUR MONEY IS SPENT ON

This is how we will be dividing up our £171,659,130 budget this year:

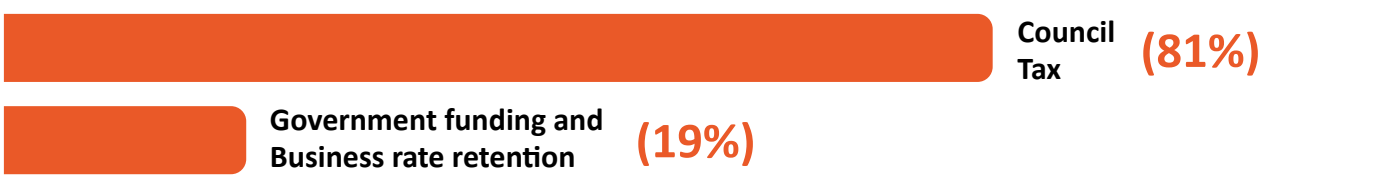


The above includes depreciation charges of £18.7m which is deducted in arriving at total net expenditure.  
As per page 45 of MTFP.  
Visit [www.wokingham.gov.uk](http://www.wokingham.gov.uk) (search 'medium term financial plan' for a full breakdown)

## WHAT DO WE SPEND OUR MONEY ON?

Did you know the majority of our money is spent on statutory services? We have growing costs year-on-year because of more residents and increased demand on services.

## WHERE OUR MONEY COMES FROM



\*Note: Each year the Council makes an allowance of non-collection of Council Tax. If the Council then exceeds its collection target, this surplus is applied the following year to support the revenue budget. This is only 0.86% of the total budget and so is not shown in this table.

## HOW MUCH COUNCIL TAX DO YOU PAY WOKINGHAM BOROUGH COUNCIL?

The Council Tax you pay is split between various precepts such as the fire authority, the police authority and individual parishes. The Council's element of council tax you pay is

### ON A BAND D PROPERTY:



## EXECUTIVE VIEW

**Imogen Shepherd-DuBey, executive Member for Finance:**  
"We can all see that Councils around the country have been getting into financial difficulties – some of them are effectively going bankrupt and it is vital for the benefit of our residents that we avoid that fate. In Wokingham Borough Council, we have had to make difficult decisions to ensure the books balance, while focusing our resources as much as possible on the most vulnerable in our community and helping everyone make more environmentally friendly choices."

