



A GREAT PLACE TO
LIVE, LEARN, WORK & GROW
AND A GREAT PLACE TO
DO BUSINESS





JOHN HALSALL,
LEADER OF THE COUNCIL

Our mission is to keep our residents safe, secure and happy and to provide the best service. Indeed we have no higher purpose than to serve our residents. I am very proud to lead the Council and its terrific team of officers and councillors who do inspirational things, such as tackling the climate emergency, challenging traffic congestion and fighting unplanned building development. We have been and will continue to be ambitious and innovative.



SUSAN PARSONAGE,
CHIEF EXECUTIVE OF WOKINGHAM BOROUGH COUNCIL

Our Community Vision sets out what we will focus on over the next four years to improve outcomes for you, our residents. We will strive to work together with you and our partners to address and improve what really matters to ensure that Wokingham borough remains a great place to live, learn, work and grow and a great place to do business.



OUR JOURNEY SO FAR



WOKINGHAM
BOROUGH COUNCIL





OUR VISION, OUR PRIORITIES



WOKINGHAM
BOROUGH COUNCIL

ENRICHING LIVES

- Champion outstanding education and enable our children and young people to achieve their full potential, regardless of their background.
- Support our residents to lead happy, healthy lives and provide access to good leisure facilities to complement an active lifestyle.
- Engage and involve our communities through arts and culture and create a sense of identity which people feel part of.
- Support growth in our local economy and help to build business.

SAFE, STRONG COMMUNITIES

- Protect and safeguard our children, young and vulnerable people.
- Offer quality care and support, at the right time, to prevent the need for long term care.
- Nurture communities and help them to thrive.
- Ensure our borough and communities remain safe for all.

CHANGING THE WAY WE WORK FOR YOU

- Be relentlessly customer focussed.
- Work with our partners to provide efficient, effective, joined up services which are focussed around you.
- Communicate better with you, owning issues, updating on progress and responding appropriately as well as promoting what is happening in our Borough.
- Drive innovative digital ways of working that will connect our communities, businesses and customers to our services in a way that suits their needs.

A CLEAN AND GREEN BOROUGH

- Do all we can to become carbon neutral and sustainable for the future.
- Protect our borough, keep it clean and enhance our green areas.
- Reduce our waste, improve biodiversity and increase recycling.
- Connect our parks and open spaces with green cycleways.

RIGHT HOMES, RIGHT PLACES

- Offer quality, affordable, sustainable homes fit for the future.
- Build our fair share of housing with the right infrastructure to support and enable our borough to grow.
- Protect our unique places and preserve our natural environment.
- Help with your housing needs and support people to live independently in their own homes.

KEEPING THE BOROUGH MOVING

- Maintain and improve our roads, footpaths and cycleways.
- Tackle traffic congestion, minimise delays and disruptions.
- Enable safe and sustainable travel around the borough with good transport infrastructure.
- Promote healthy alternative travel options and support our partners to offer affordable, accessible public transport with good network links.

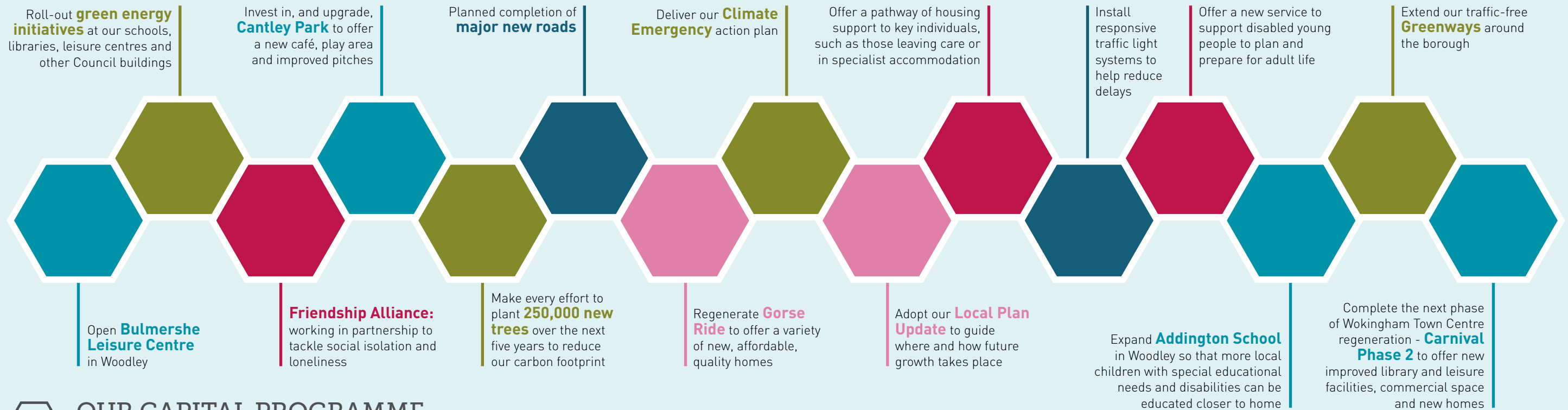




OUR NEXT STEPS, OUR FUTURE: HOW WE WILL CONTINUE TO IMPROVE WOKINGHAM BOROUGH

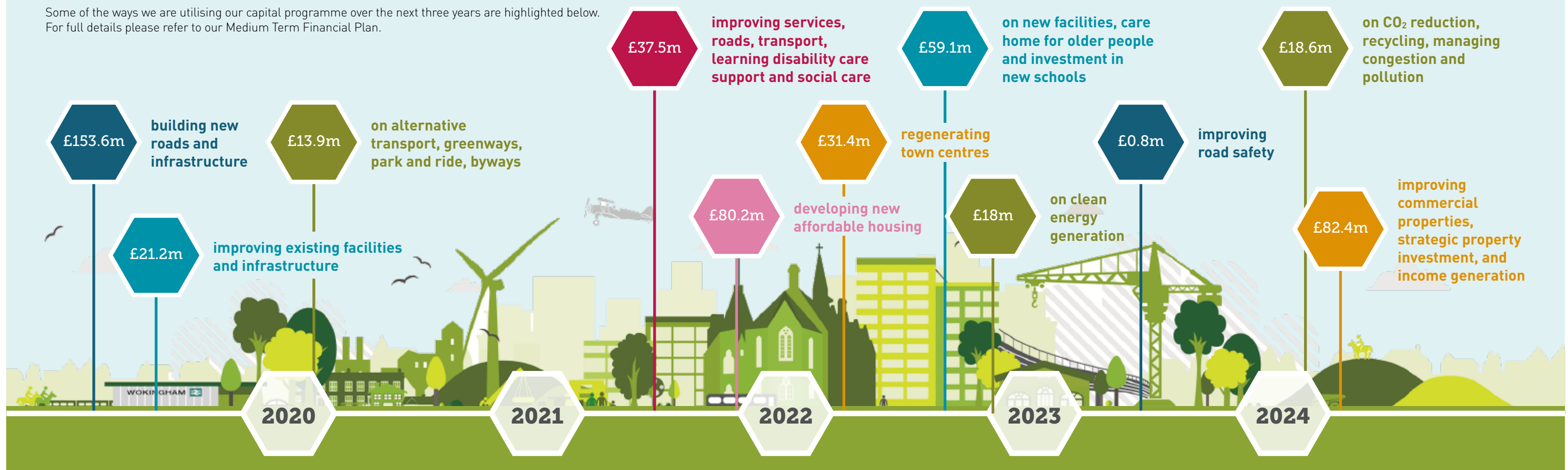


WOKINGHAM
BOROUGH COUNCIL



OUR CAPITAL PROGRAMME 2020-23

Some of the ways we are utilising our capital programme over the next three years are highlighted below. For full details please refer to our Medium Term Financial Plan.





DID YOU KNOW?



WOKINGHAM
BOROUGH COUNCIL



We receive around **470,000** visits to our libraries per year



You are recycling about **95** tonnes of food waste per week



We completed **365** affordable homes in 2019



Our customer delivery team responds to over **160,000** phone calls, **30,000** emails and over **10,000** web-chats per year. They also process over **1,200** freedom of information requests each year



We maintain around **420** hectares (equivalent of about 600 football pitches) of countryside in Wokingham borough; which includes country parks, nature reserves, SANGs and public rights of way



We have upgraded nearly all our street lights to LED lighting; reducing energy consumption by **60%**



Over **90%** of children in Wokingham borough attend a "Good" or "Outstanding" school



21% of people with learning disabilities in Wokingham borough are in paid employment compared to 6% across England



1,300 older residents enjoy our Shine physical activity programme with more than **300** people joining our walks each week

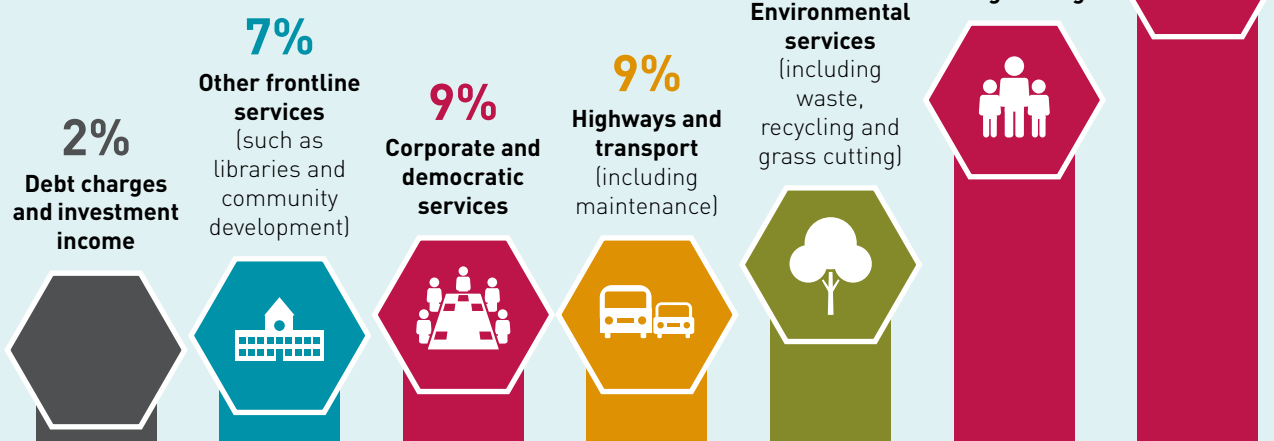


Nearly **90%** of people, who responded to our annual New Homes Survey, say they are happy with their new home



OUR BUDGET

Our budget is allocated to services as follows, with around 80% being used to provide statutory services such as adult social care, children's services, waste collection and disposal and highways. Further financial information can be found in our Medium Term Financial Plan.



HOW TO FIND OUT MORE

Our Community Vision has been created through engagement with our residents, partners and local businesses. We would like to thank you for engaging with us and sharing your views. Your comments and feedback have helped confirm our vision and priorities for Wokingham borough for the next four years. Further details of how we plan to deliver these priorities, can be found in our Corporate Delivery Plan which is available on our website www.wokingham.gov.uk search 'Community Vision'.