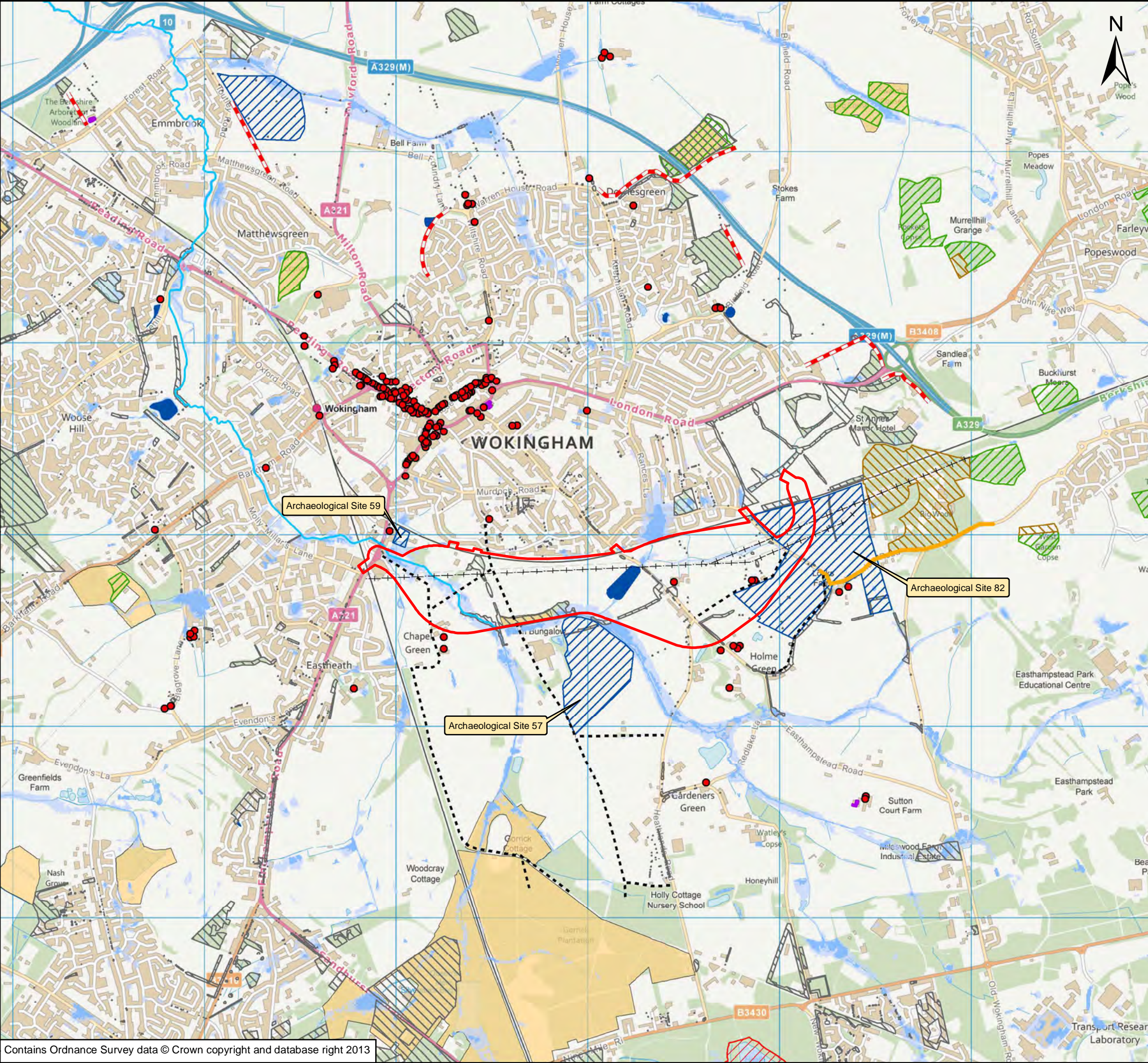

Appendix A: Environmental Figures



Key

- Study Area
- Listed Building
- Existing Power Lines
- Public Right of Way
- Proposed Road Widening to Peacock Lane/Waterloo Road
- Main River Lines
- Public Rights of Way
- Buildings of Traditional Local Character
- Archaeological Site
- TPOs
- Site of Special Scientific Interest (SSSI)
- Ancient Woodland
 - Replanted
 - Semi Natural
- Balancing Ponds
- 1 in 30yr Flood Level
- 1 in 200yr Flood Level
- Local Wildlife Sites

Indicative boundaries of Archaeological Sites as designated within the Development Plan 2014 TB25

REV	DATE	BY	DESCRIPTION	CHK	APP

DRAWING STATUS: Revision A

Mountbatten House, Basing View,
Basingstoke, Hampshire, RG21 4HJ
Tel: +44 (0)1256 318 800, Fax: +44 (0)1256 318 700
<http://www.wspgroup>

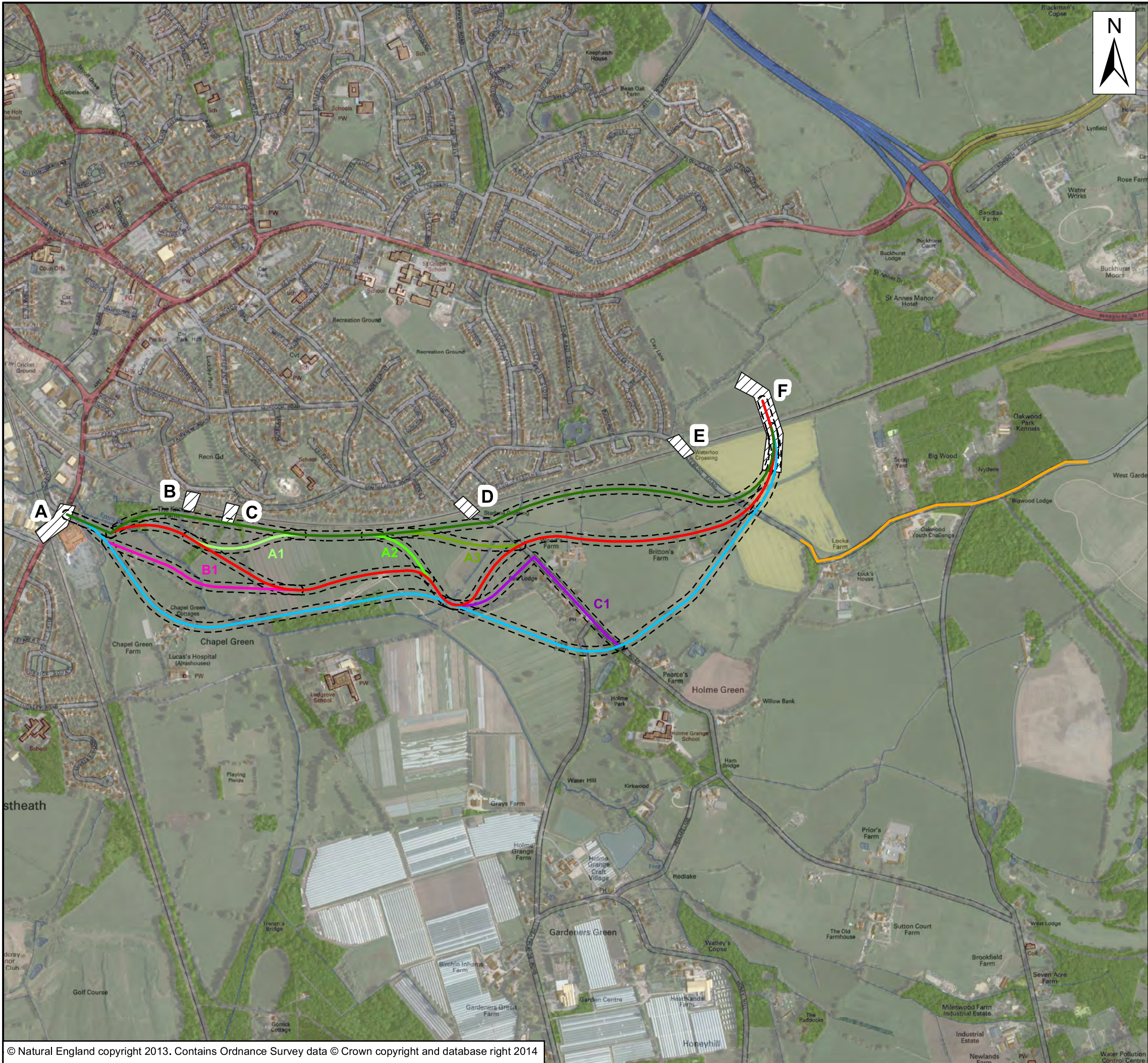
CLIENT: **WOKINGHAM BOROUGH COUNCIL**

PROJECT: South Wokingham

TITLE: Overall Study Area Context and Environmental Constraints Plan

SCALE @ A3: 1:20,000	CHECKED: VN	APPROVED: VB
FILE: Figure A.1a	DESIGN-DRAWN: GH	DATE: 07/03/2014
PROJECT No: 36816	DRAWING No: Figure A.1a	REV: A

© WSP Group plc



Key

- Route Option A
- Route Option B
- Route Option C
- Route Option A Alternative Link 1 (A1)
- Route Option A Alternative Link 2 (A2)
- Route Option A Alternative Link 3 (A3)
- Route Option B Alternative Link (B1)
- Route Option C Alternative Link (C1)
- Proposed Road Improvements to Waterloo Road/Peacock Lane
- 15m Buffer
- Local Study Area

REV	DATE	BY	DESCRIPTION	CHK	APP

DRAWING STATUS: Revision B

WSP

Mountbatten House, Basing View,
Basingstoke, Hampshire, RG21 4HJ
Tel: +44 (0)1256 318 800, Fax: +44 (0)1256 318 700
<http://www.wspgroup>

CLIENT:

 **WOKINGHAM**
BOROUGH COUNCIL

PROJECT:

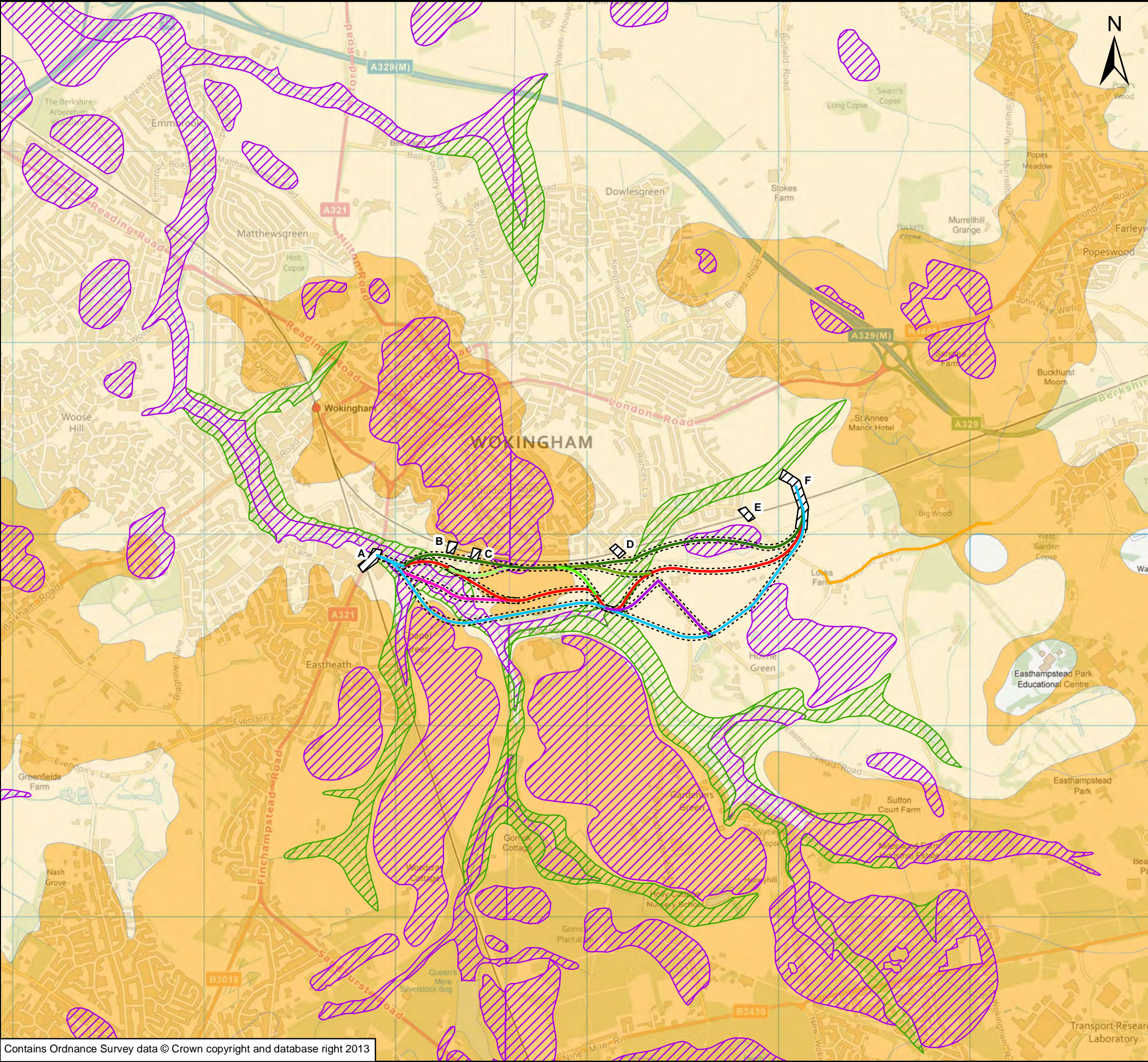
South Wokingham

TITLE:

Aerial Photography View

SCALE @ A3: 1:12,000	CHECKED: HS	APPROVED: VN
FILE: -	DESIGN-DRAWN: RB	DATE: 20/02/2014
PROJECT No: 36532	DRAWING No: Figure A.1b	REV: B

© WSP Group plc



Key



- Route Option A
- Route Option B
- Route Option C
- Route Option A Alternative Link 1
- Route Option A Alternative Link 2
- Route Option A Alternative Link 3
- Route Option B Alternative Link
- Route Option C Alternative Link
- Proposed Road Improvements to Waterloo Road/Peacock Lane
- 15m Buffer
- Local Study Area

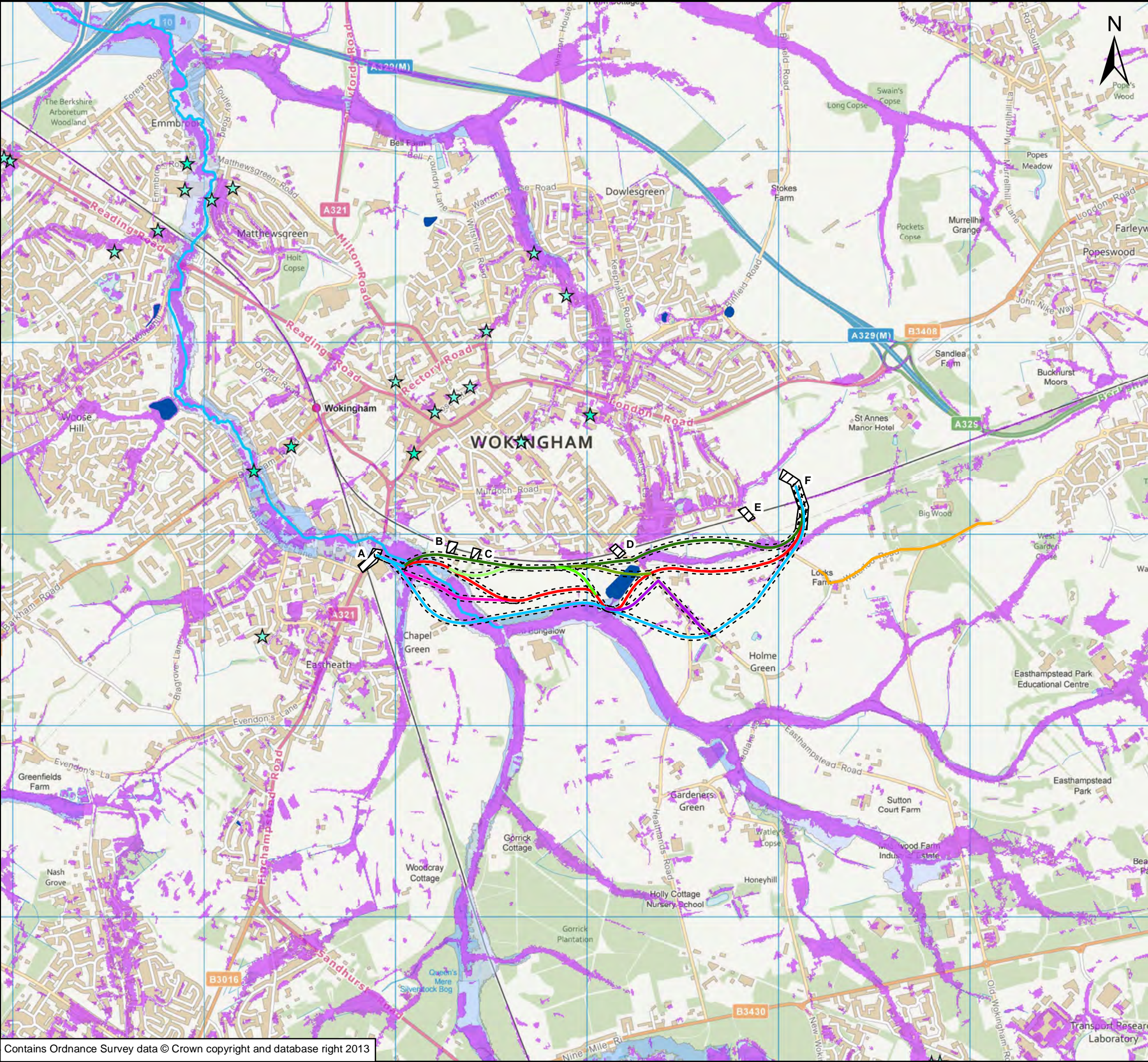
Aquifer Typology Superficial

- Minor
- Minor+Major
- Minor+Non
- Non

Aquifer Typology Bedrock

- Major
- Minor
- Non

REV	DATE	BY	DESCRIPTION	CHK	APP
DRAWING STATUS: Revision A					
<div><p>Mountbatten House, Basing View, Basingstoke, Hampshire, RG21 4HJ Tel: +44 (0)1256 318 800, Fax: +44 (0)1256 318 700 http://www.wspgroup</p></div>					
CLIENT:  WOKINGHAM BOROUGH COUNCIL					
PROJECT: South Wokingham					
TITLE: Aquifers - Superficial and Bedrock					
SCALE @ A3:	CHECKED:		APPROVED:		
1:20,000	VN		VB		
FILE:	DESIGN-DRAWN:		DATE:		
Figure A.2	GH		18/10/2013		
PROJECT No:	DRAWING No:		REV:		
36816	Figure A.2		A		
© WSP Group plc					



Key

Route Option A

Route Option B

Route Option C

Route Option A Alternative Link 1

Route Option A Alternative Link 2

Route Option A Alternative Link 3

Route Option B Alternative Link

Route Option C Alternative Link

Proposed Road Improvements to Waterloo Road/Peacock Lane

15m Buffer

Local Study Area

Historic Flooding 1993

Main River Lines 10k

Balancing Ponds

1 in 30yr Flood

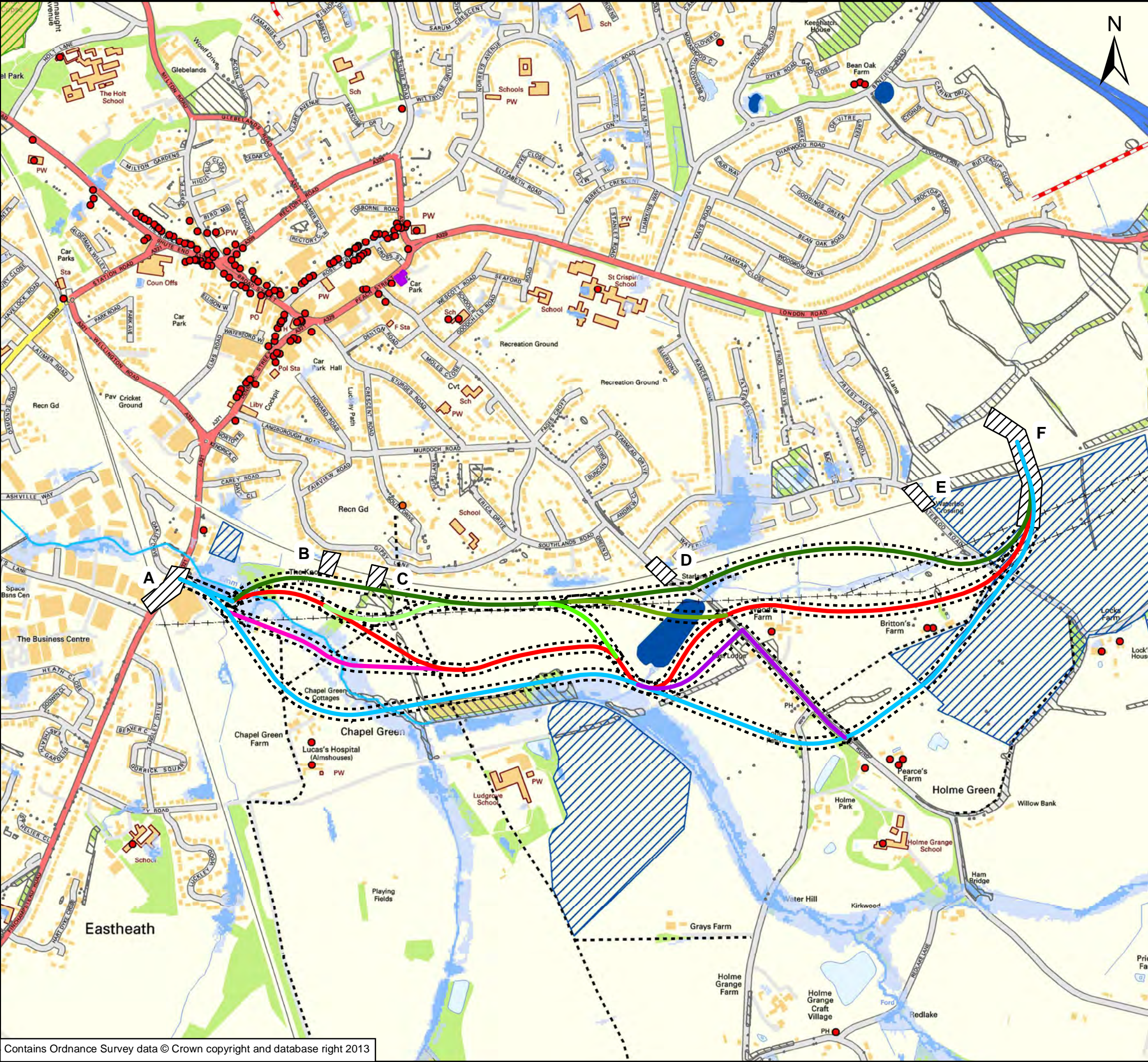
1 in 200yr Flood

Flood Zone 2

Flood Zone 3

REV	DATE	BY	DESCRIPTION	CHK	APP
DRAWING STATUS:					
Revision A					
<div><div><div><div><div></div><div>WSP</div></div><div><div>Mountbatten House, Basing View, Basingstoke, Hampshire, RG21 4HJ Tel: +44 (0)1256 318 800, Fax: +44 (0)1256 318 700 http://www.wspgroup</div></div></div><div>CLIENT:</div><div><div><div></div><div>WOKINGHAM BOROUGH COUNCIL</div></div></div><div>PROJECT:</div><div>South Wokingham</div><div>TITLE:</div><div>Water Environment</div><div><div>SCALE @ A3: 1:20,000</div><div>CHECKED: VN</div><div>APPROVED: VB</div></div><div><div>FILE: Figure A.3</div><div>DESIGN-DRAWN: GH</div><div>DATE: 18/10/2013</div></div><div><div>PROJECT No: 36816</div><div>DRAWING No: Figure A.3</div><div>REV: A</div></div><div>© WSP Group plc</div></div></div>					

Contains Ordnance Survey data © Crown copyright and database right 2013



Key

Route Option A

Route Option B

Route Option C

Route Option A Alternative Link 1

Route Option A Alternative Link 2

Route Option A Alternative Link 3

Route Option B Alternative Link

Route Option C Alternative Link

Local Study Area

15m Buffer

Listed Building

Existing Power Lines

Public Right of Way

Main River Lines

Public Rights of Way

Buildings of Traditional Local Character

Archaeological Site

TPOs

Site of Special Scientific Interest (SSSI)

Ancient Woodland

Replanted

Semi Natural

Balancing Ponds

1 in 30yr Flood Level

1 in 200yr Flood Level

Local Wildlife Sites

REV	DATE	BY	DESCRIPTION	CHK	APP
DRAWING STATUS: Revision A					

Mountbatten House, Basing View,
Basingstoke, Hampshire, RG21 4HJ
Tel: +44 (0)1256 318 800, Fax: +44 (0)1256 318 700
<http://www.wspgroup>

CLIENT:

WOKINGHAM
BOROUGH COUNCIL

PROJECT:

South Wokingham

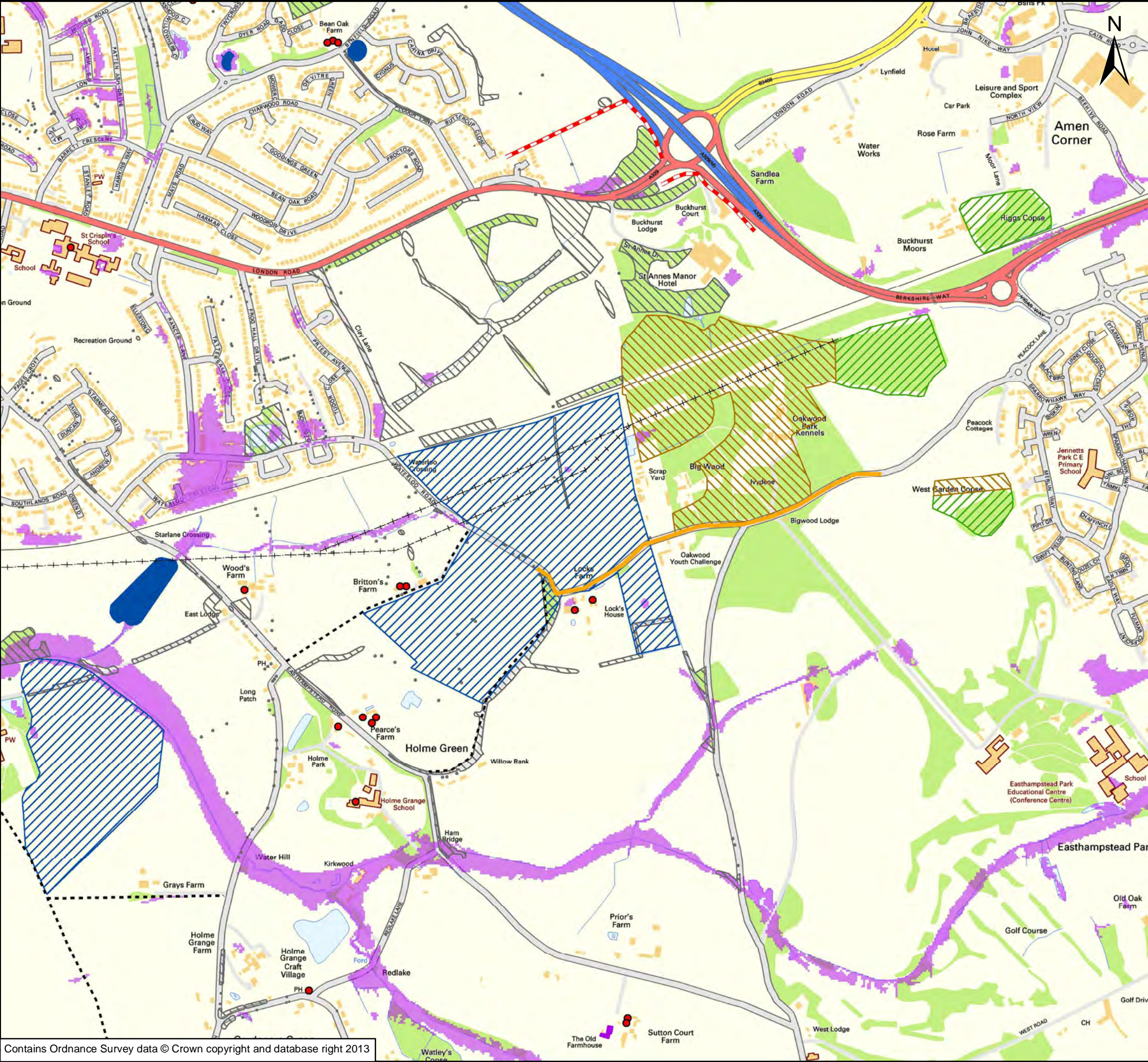
TITLE:

Routes and Local Study Areas
Environmental Constraints Plan

SCALE @ A3: 1:10,000	CHECKED: VN	APPROVED: VB
FILE: Figure A.4	DESIGN-DRAWN: GH	DATE: 07/03/2014
PROJECT No: 36816	DRAWING No: Figure A.4	REV: A

© WSP Group plc

Contains Ordnance Survey data © Crown copyright and database right 2013



Contains Ordnance Survey data © Crown copyright and database right 2013


Key

- Proposed Road Improvements to Waterloo Road/Peacock Lane
- Listed Building
- Existing Power Lines
- Public Right of Way
- Main River Lines
- Public Rights of Way
- Buildings of Traditional Local Character
- Archaeological Site
- TPOs
- Site of Special Scientific Interest (SSSI)
- Ancient Woodland
- Replanted
- Semi Natural
- Balancing Ponds
- 1 in 30yr Flood Level
- 1 in 200yr Flood Level

REV	DATE	BY	DESCRIPTION	CHK	APP


DRAWING STATUS:

Revision A



Mountbatten House, Basing View,
Basingstoke, Hampshire, RG21 4HJ
Tel: +44 (0)1256 318 800, Fax: +44 (0)1256 318 700
<http://www.wspgroup>

CLIENT:



WOKINGHAM
BOROUGH COUNCIL

PROJECT:

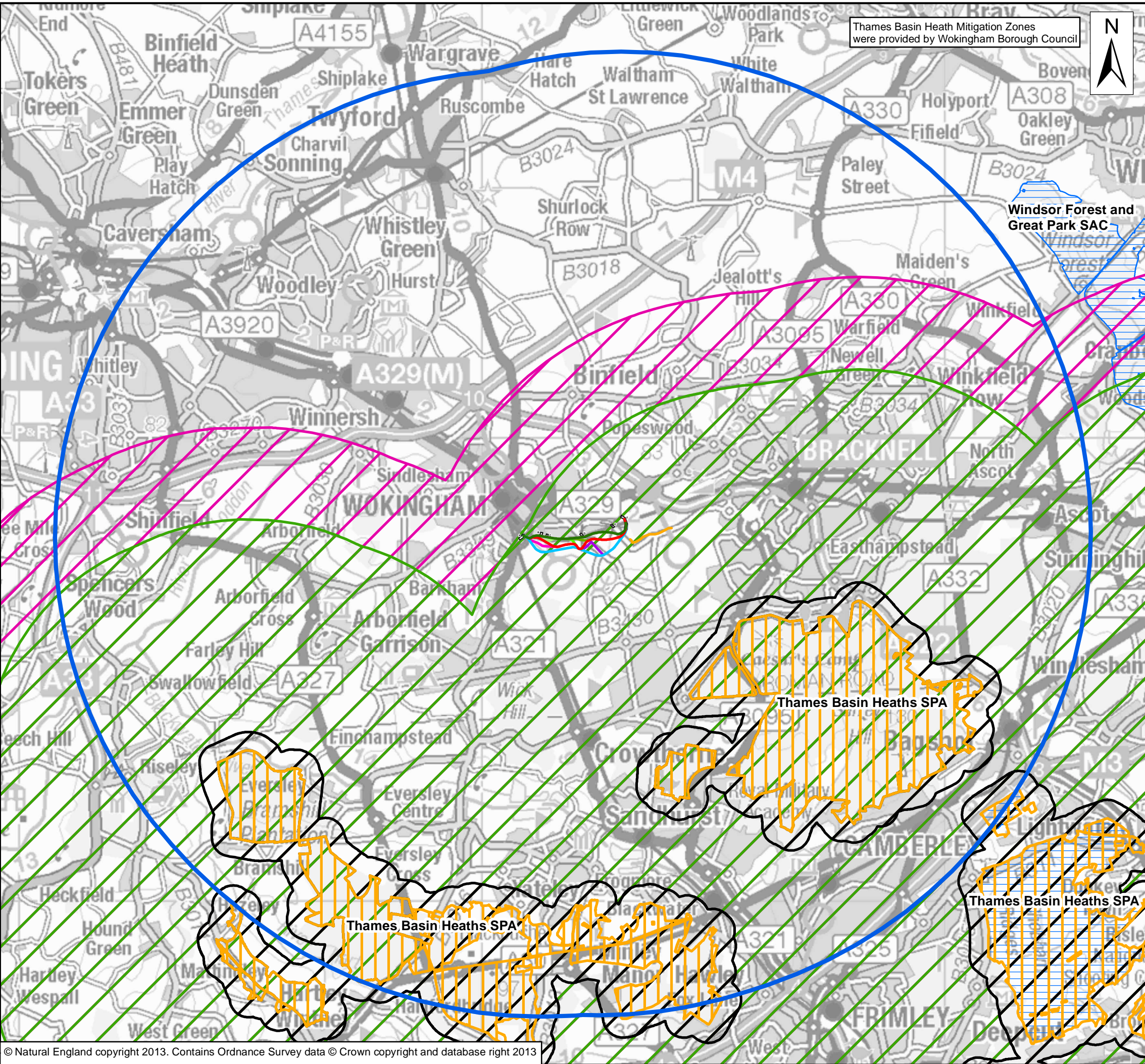
South Wokingham

TITLE:

Peacock Lane / Waterloo Road Widening
Environmental Constraints Plan

SCALE @ A3:	CHECKED:	APPROVED:
1:10,000	VN	VB
FILE:	DESIGN-DRAWN:	DATE:
Figure A.5	GH	07/03/2014
PROJECT No:	DRAWING No:	REV:
36816	Figure A.5	A

© WSP Group plc



Thames Basin Heath Mitigation Zones
were provided by Wokingham Borough Council



- Key
- Route Option A
 - Route Option B
 - Route Option C
 - Route Option A Alternative Link 1
 - Route Option A Alternative Link 2
 - Route Option A Alternative Link 3
 - Route Option B Alternative Link
 - Route Option C Alternative Link
 - Proposed Road Improvements to Waterloo Road/Peacock Lane
 - Local Study Area
 - 10km Search Area
 - Special Protection Area (SPA)
 - SPA 400m Mitigation Zone
 - SPA 5km Mitigation Zone
 - SPA 7km Mitigation Zone
 - Special Area of Conservation (SAC)

REV	DATE	BY	DESCRIPTION	CHK	APP

DRAWING STATUS: Revision A



Mountbatten House, Basing View,
Basingstoke, Hampshire, RG21 4HJ
Tel: +44 (0)1256 318 800, Fax: +44 (0)1256 318 700
<http://www.wspgroup>

CLIENT:



WOKINGHAM
BOROUGH COUNCIL

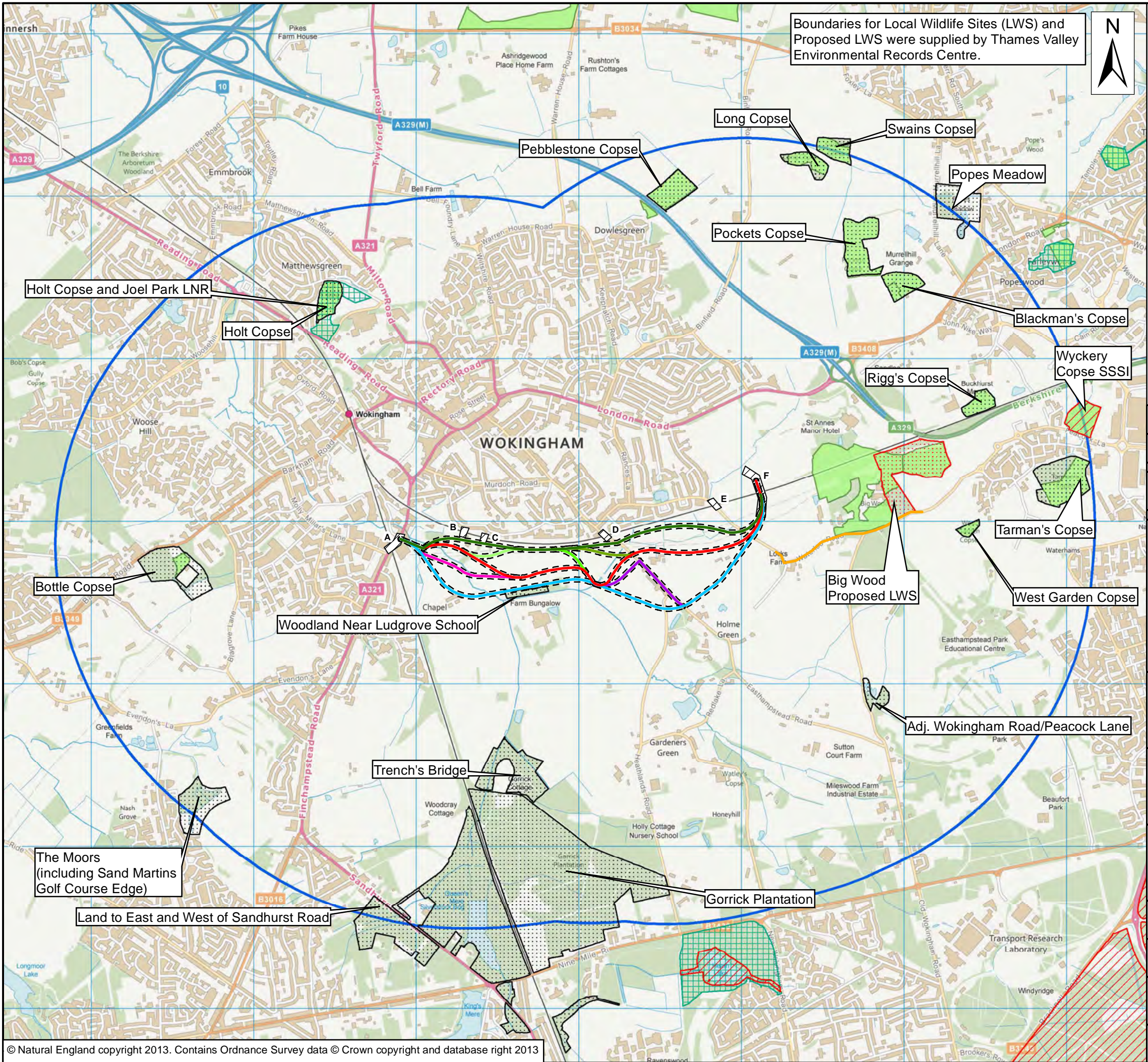
PROJECT:

South Wokingham

TITLE:

Desk Study Results: European Designated Sites

SCALE @ A3: 1:82,695	CHECKED: HS	APPROVED: VN
FILE: -	DESIGN-DRAWN: RB	DATE: 18/10/2013
PROJECT No: 36532	DRAWING No: Figure A.6	REV: A



Boundaries for Local Wildlife Sites (LWS) and Proposed LWS were supplied by Thames Valley Environmental Records Centre.



- Key
- Route Option A
 - Route Option B
 - Route Option C
 - Route Option A Alternative Link 1
 - Route Option A Alternative Link 2
 - Route Option A Alternative Link 3
 - Route Option B Alternative Link
 - Route Option C Alternative Link
 - Proposed Road Improvements to Waterloo Road/Peacock Lane
 - 15m Buffer
 - Local Study Area
 - 2km Buffer
 - Local Wildlife Sites (LWS)
 - Proposed Local Wildlife Site
 - Site of Special Scientific Interest (SSSI)
 - Local Nature Reserve (LNR)
 - National Nature Reserve (NNR)
 - Ancient Woodland Inventory

REV	DATE	BY	DESCRIPTION	CHK	APP

DRAWING STATUS: Revision A



Mountbatten House, Basing View,
Basingstoke, Hampshire, RG21 4HJ
Tel: +44 (0)1256 318 800, Fax: +44 (0)1256 318 700
<http://www.wspgroup>

CLIENT:  **WOKINGHAM BOROUGH COUNCIL**

PROJECT: South Wokingham

TITLE: Desk Study Results: Other Designated Sites

SCALE @ A3: 1:23,447	CHECKED: HS	APPROVED: VN
FILE: -	DESIGN-DRAWN: RB	DATE: 18/10/2013
PROJECT No: 36532	DRAWING No: Figure A.7	REV: A

© WSP Group plc