



**WOKINGHAM
BOROUGH COUNCIL**

**Local Development Scheme
October 2018**

**TIMETABLE (LOCAL DEVELOPMENT SCHEME) SETTING OUT WHAT
LOCAL PLANS ARE BEING PRODUCED BY THE AUTHORITY**

2018 to 2021

CONTENTS

SUMMARY

1.0	INTRODUCTION	2
	What is a Local Development Scheme (LDS)?	2
	Why is the LDS being amended?	2
2.0	PROPOSED LOCAL PLANS	3
	What Local Plans are to be produced?	3
	What process do Local Plans have to go through?	3
	What is the timetable for the preparation of the Local Plans?	6
3.0	Other plans	8
	Neighbourhood Plans	8
	Supplementary Plans	8

SUMMARY

The government requires that all local planning authorities produce a Local Development Scheme (LDS) which is a public statement of the councils programme for the production of Local Plans. Local Plans are very important as they are the key document through which the council sets the vision and framework for the management of future development. As such they form the starting point for making decisions on planning applications.

What Local Plans are being produced?

Between 2018 and 2022 the following Local Plans will be produced:

1. Local Plan Update
2. Minerals and Waste Local Plan

Both plans will be reflected on changes to the policies Map.

The table below summarises the timetable for future stages in the preparation of each plan. There will be opportunities for engagement at key stages.

Stage	Minerals and Waste Local Plan	Local Plan Update
Draft Plan Consultation	August - October 2018	Autumn 2019
Consultation on Proposed Submission Document	January – May 2019	Summer 2020
Submit to Secretary of State	Winter 2019	Spring 2021
Pre Hearing Meeting	Spring 2020	Summer 2021
Examination	Spring 2020	Summer 2021
Inspector's Report received	Summer 2020	Winter 2021/2022
Adoption	Winter 2020	Spring 2022

1.0 **INTRODUCTION**

What is a Local Development Scheme (LDS)?

- 1.1 The government requires that all local planning authorities produce a Local Development Scheme (LDS) which is a public statement of the councils programme for the production of Local Plans. Local Plans are very important as they are the key document through which the council sets the vision and framework for the management of future development. As such they form the starting point for making decisions on planning applications.
- 1.2 This LDS sets out:
- The Local Plans the council aims to produce; and
 - The programme for producing them, including when public consultation is likely to take place and other key stages.
- 1.3 This LDS covers the period 2018 to 2021.
- 1.4 Copies of this LDS can be viewed/found at:
- Via <http://www.wokingham.gov.uk/planning-policy/planning-policy-information/local-plan-update/>
 - The Council's office at Shute End, Wokingham.

Why is the LDS being amended?

- 1.5 Since the publication of the last LDS in July 2016, there have been a change in circumstances which have resulted in the need to revise the LDS. These are outlined below.

Re-evaluation of previously approved timetable

- 1.6 An Local Plan Update Issues and Options consultation was undertaken over the summer 2016. The primary purpose of this consultation was to get an understanding from residents, businesses and other people on what the Local Plan Update should cover as well as how some issues might be approached.
- 1.7 A key message was the importance of infrastructure. With a larger number of sites promoted by landowners for potential development, additional time is required to gather necessary information and undertake a robust assessment of options. The next stage of the Local Plan Update, the Spatial Options, will provide the opportunity for the public/stakeholders to comment on the large number of sites that have been submitted.

Agreement of the joint planning for minerals and waste

- 1.8 The local planning authorities Bracknell Forest Council, Reading Borough Council, the Royal Borough of Windsor and Maidenhead and Wokingham Borough Council have agreed and are working to prepare a joint minerals and waste plan. The update reflects the agreed timetable.

If I need further information about the LDS, who should I contact?

- 1.9 Further advice on this LDS or other planning policy documents can be obtained from the Council's Growth and Delivery Team on (0118) 974 6478 or email policyandplans@wokingham.gov.uk. You can find more out about the Local Plans by going to <http://www.wokingham.gov.uk/planning-policy/planning-policy-information/>

2.0 **PROPOSED LOCAL PLANS**

What Local Plans are to be produced?

2.1 Between 2018 and 2021 the following Local Plans will be produced:

1. Local Plan Update
2. Minerals and Waste Local Plan

Local Plan Update

2.2 The Local Plan Update will review and put in place up-to-date planning policies for non-minerals and waste development, up to 2036. Upon completion it will replace the current Core Strategy and Managing Development Delivery plans which cover the period to 2026.

2.3 The Local Plan Update will cover a wide range of matters. A key area will be assessing the future development needs for new homes, employment land and other uses such as accommodation for Gypsies and Travellers. It will then set a strategy for delivery including allocating key sites as necessary.

Minerals and Waste Local Plan

2.4 The Central and Eastern Berkshire Joint Minerals and Waste Local Plan will review and put in place up-to-date planning policies for minerals and waste development. The plan is being produced jointly by the local planning authorities of Bracknell Forest Council, Reading Borough Council, the Royal Borough of Windsor and Maidenhead, and Wokingham Borough Council. The authorities have commissioned Hampshire Services of Hampshire County Council, to prepare the plan.

2.5 The plan will identify the approach to the delivery of minerals and the treatment of waste and will allocate sites for such uses. Upon completion it will replace all the saved policies in the Replacement Minerals Local Plan¹ and Waste Local Plan for Berkshire².

Policies Map

2.6 The Policies Map spatially illustrates the policies on an Ordnance Survey base map. It will be updated to reflect any area specific policies in as Local Plans are adopted (completed). The Policies Map will show matters such as:

- local development constraints, e.g. Green Belt;
- designations, e.g. development limits (outside of which it would be difficult for example to get planning permission for a new housing site);
- site allocations, e.g. sites may be allocated for housing, employment, etc.

What process do Local Plans have to go through?

2.7 Local Plans are prepared in accordance with a regulatory process. The process includes consultation with the community and stakeholders. Following its preparation, a Local Plan is subject to examination by an independent Planning Inspector.

2.8 The four main stages in the preparation of a Local Plan are:

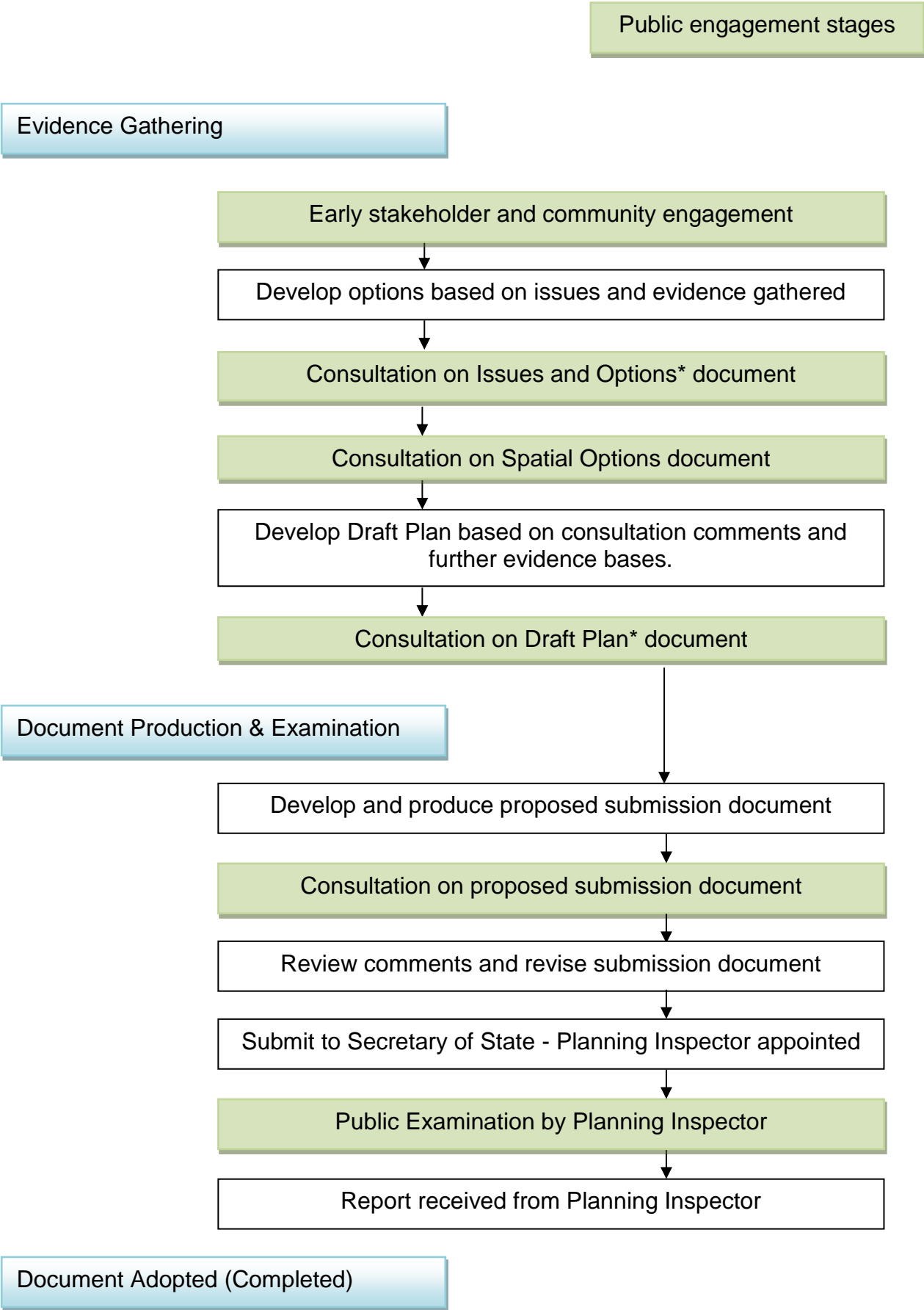
¹ Adopted in 1995 and subsequently adopted alterations in 1997 and 2001 (including Appendices and saved policies)

² Adopted in 1998 (including saved policies)

1. The pre-production stage, including evidence gathering by the council on key issues and development options, and consulting statutory bodies on the scope of the sustainability appraisal.
2. The production stage, including public and stakeholder consultation by the council on the development issues and options, and the scope of the Local Plan and the consideration of consultation responses.
3. The submission and examination stage, where the Local Plan will be submitted to the Secretary of State the subject to scrutiny by an independent Planning Inspector who will assess it for its the legal compliance and soundness.
4. Finally, the adoption stage, where the Local Plan formally becomes part of the development plan.

2.9 These stages are further explained in Figure 1 below. Consultation with different groups is guided by the council's Statement of Community Involvement

Figure 1: Local Plan Process



* These stages can be undertaken as two separate stages (Issues & Options and Preferred Options) or as one Draft Options Stage

What is the timetable for the preparation of the Local Plans?

2.10 Figure 2 below summarises the key stages for the preparation of the Local Plans.

Figure 2 Purpose, stages and dates for producing Local Plans (2016 to 2022)

Stage	Purpose of Stage	Minerals and Waste Local Plan	Local Plan Update
Early Stakeholder & Community Engagement	Early evidence gathering stage, which may include the public and relevant stakeholders. This produces an evidence base from which to form policies	June 2016 (start)	Oct 2015 (start)
Scoping Report consultation	Consultation on what sustainability objectives (social, economic and environmental) should be used to assess whether the Local Plan is sustainable	Sep 2016 – Mar 2017	Nov – Dec 2015
Issues & Options Consultation +	Consultation stage giving the public/stakeholders a first opportunity to shape proposed options and identify issues.	Mar - Sep 2017	Aug – Sep 2016
Spatial Options consultation	Consultation stage giving the public/stakeholders the opportunity to comment on all the sites promoted to the council for future development		November 2018 – January 2019
Draft Plan consultation +	Further consultation stage, taking account of comments made at earlier (Issues & Options) stage (if required), which will set out the preferred options. At this stage evidence is still being gathered, and this is the first opportunity for the public/stakeholders to respond to the content of the plan, including proposed site allocations. The Plan can still be changed after this stage.	August - October 2018	Autumn 2019
Consultation on Proposed Submission Document	This takes account of comments made at the earlier Draft Plan stage.	January – May 2019	Summer 2020

Stage	Purpose of Stage	Minerals and Waste Local Plan	Local Plan Update
	Consultation on proposed submission document; allowing the public/stakeholders to review and comment on its justification, effectiveness, consistency with national policy and whether it meets its development and infrastructure requirements.		
Submit to Secretary of State#	Document submitted to the Secretary of State who appoints Planning Inspector to oversee public examination.	Winter 2019	Spring 2021
Pre Hearing Meeting*	Planning Inspector decides whether a pre hearing meeting is required.	Spring 2020	Summer 2021
Examination	Planning Inspector holds public hearings to examine whether the document is "sound" (see paragraph 35 of National Planning Policy Framework .) There is an opportunity for those who commented at the proposed submission stage to present their views/suggested changes at the hearings. Date depends on whether Planning Inspectorate consider that a pre hearing meeting is necessary	Spring 2020	Summer 2021
Inspector's Report received~	Report received stating whether document is "sound."	Summer 2020	Winter 2021/22
Adoption	Document is officially adopted and becomes policy.	Winter 2020	Spring 2022

^ Saved policies are those which are still used to determine planning applications following the decision of the Secretary of State on 24/9/07

Assumes that only minor changes, i.e. typographical changes are needed following consultation on the Proposed Submission document

*The Planning Inspectorate usually decides whether a Pre-Hearing meeting is needed. This could affect timing of subsequent stages.

~Assumes no further consultation on main modifications necessary following examination hearings

+These stages can be undertaken as two separate stages (Issues & Options and Preferred Options) or as one Draft Options Stage.

3.0 OTHER PLANS

Neighbourhood Development Plans

- 3.1 Parish and Town Councils can now prepare Neighbourhood Development Plans (NDP) and/or Orders. The production of a NDP or Order has to be instigated by the relevant Parish or Town Council and does not form part of this LDS which reflects council plans.
- 3.2 Once adopted, NDPs form part of the development plan.
- 3.3 Any NDP must be in general conformity with 'strategic policies' in the Local Plan and with Government policy. NDPs are not able to propose lower levels of development than those set out in up to date Local Plans but could propose higher levels. Before an NDP is adopted it must be subject to a referendum. If over 50% of the votes are in favour the local planning authority would have a duty to adopt the NDP unless it does not meet regulations. Further information on neighbourhood planning can be found via <http://www.wokingham.gov.uk/planning-policy/planning-policy-information/neighbourhood-planning/>
- 3.4 Within WBC there is currently one completed NPD for Shinfield Parish. A number of other NDPs are being worked on by Parish Councils. Further information is available on the website: <http://www.wokingham.gov.uk/planning-policy/planning-policy-information/neighbourhood-planning/>

Supplementary Plans

- 3.5 Supplementary Planning Documents and other forms of supplementary guidance provide more advice to explain the policies and proposals set out in the Local Plan. Unlike Local Plans, their preparation of not subject to examination, however consultation is a key element of their preparation.